

UltraFlow Pond Pump

1. INSTRUCTION FOR USE

Please read the operating instructions and familiarize yourself with the device before placing it in service. Correct and safe use of the system requires strict compliance with the safety instructions.

For safety reasons children and young people under 16 years of age, as well as people that cannot recognize potential hazards, or people that are not familiar with these instructions, may not use this device.

2. UN PACKING

Notify your dealer immediately if there are external damages.

3. CONVENTIONAL USE

You can displace clean and dirty pond water and aquarium with a temperature of +4°C to +35°C. Pump is designed to run a garden pond, filter or waterfall.

4. SAFETY INSTRUCTIONS



This unit is designed for outdoor use only. It is waterproof and should be situated safely under the pond water. Ideally the pump should be situated at the bottom of the pond as this is where fish waste and debris collects. Take care to ensure that you can easily lift your pump out of the water for routine maintenance. If this is necessary do not pick your pump up by the electrical cable but by the handle of the pump. Always disconnect all equipment in the pond before starting to handle, maintain, repair or install any pond equipment. The pump is electrically operated so great care must be taken during installation and operation. The following electrical and safety guidelines must be carefully followed.

Each pump is supplied with a 10 metre length of 3 core electrical cable which is permanently connected to the pump.

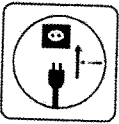


The wires in the mains electrical lead are coloured in accordance with the following code:

- BLUE – Neutral (marked with an "N" in most terminal connections)
- BROWN – LIVE (marked with an "L" in most terminal connections)
- GREEN/YELLOW – EARTH (marked "E" or " " in most terminal connections)

The termination to the mains supply should be permanent, inside a dry weatherproof enclosure, through a double pole switched fused spur with a minimum contact gap of 3mm – (disconnected) to BS 3676 – and fitted with a 3 or 5 amp fuse. Exposed cable runs should be sensibly positioned and protected if necessary by armoured conduit. A 10mA or 30mA Residual Current Circuit Breaker (RCD) MUST be fitted to the mains supply. Permanent installers to the mains supply (hard wiring) must comply with the regulations of the local electricity authority which may stipulate the use of metal or plastic conduit to protect the cable. If in any doubt about wiring to the mains supply contact a qualified electrician or your local electricity authority. Protect from frost.

1st January 2005 revised Building Regulations for England and Wales. Installing this product in the garden is classified as 'notifiable'. The Regulations now require you to tell your local authority building control department that you intend to install this product before installation. Your local authority will let you know how you can get your installation approved.



5. PLACING IN SERVICE

Read and familiarise yourself with the safety instructions (4). Compare line voltage (V) and frequency (Hz) of your electrical circuit with the data on the model plate. This date must agree. Fastening a hauling rope to the handle will make it easier to pull pump out of water when required. Connect hose(s) as required to the pump. Install pump on a level surface at least 20cm below the water surface. Maximum permitted insertion is shown on the model plate.

UltraFlow Pond Pump

<6> Do not place the pump directly in the pond floor mud; place the pump on a raised surface.

<7> Lay the power cord in a protected manner to exclude the possibility, of damage.

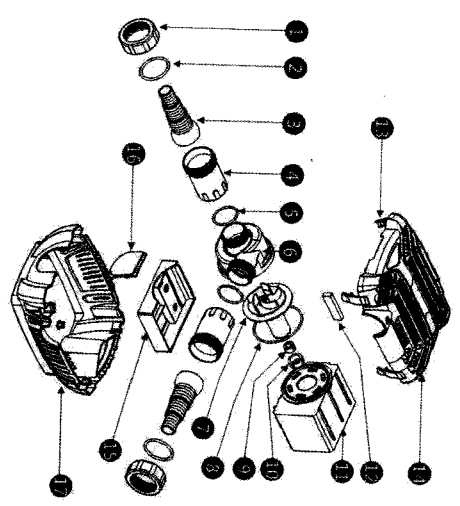
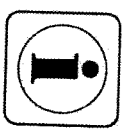
<8> Connect the pump to the electrical circuit.

Additional installation instructions:
Our specified outputs are always measured directly at the pump outlet (without hoseconnection and accessories). To achieve the highest possible pump output, keep the hose connections as short as possible. Elbows, angles and other connecting elements should be reduced to a minimum, as they lessen the pump output.

6. MAINTENANCE/CLEANING

- <1> Follow the safety instructions (section 4.0).
- <2> Clean the filter housing monthly, or if the pump capacity is reduced, by using a soft brush under running water.
- <3> Also clean the pump in the case of frequent use.

- 6.1 Cleaning the Pump
 - (1) Dismantle the filter housing.
 - (2) Clean the pump with a soft brush under flowing water.
 - (3) Remove any grime in the rotor through the openings.
- Warning: Never open the motor housing. Life threatening hazard!



1	Nut	10	Bearing housing
2	O-ring1	11	Motor body
3	Inlet/Outlet adaptor	12	Rubber stopper
4	Inlet/Outlet adaptor	13	Fastening clip
5	O-ring2	14	Upper filter cage
6	Pump housing	15	Motor bracket
7	Rotor subassembly	16	Baffle
8	O-ring3	17	Lower filter cage
9	Ceramic bearing		

7. FEATURES

- <1> Apply to ponds, rocky, bourn, aquarium tanks and seafood tanks with water recycling equipment matching.
- <2> The design of filter screen with oversized area, extend maintenance period.
- <3> Spiral propeller allows the dirt particlesize as 6mm.
- <4> Use ceramic shaft, wear resistance, no rust, long service life; Both fresh and sea water, do not contain copper element.
- <5> This product realize free tool demotion, easy to clean.
- <6> The outlet realize multistage over, suitable for for variety of pipe diameter connection.